

22-12-2014


**Best in the Business**

**EFCON<sup>®</sup>water**  
EFFLUENT CONTROL SYSTEMS



Flow  
Level  
Pumps  
Analytic  
**Samplers**

 Abwasser Probenahme

 Wastewater Samplers

 Preleveurs

 Afvalwater monsternamen

**EFCON<sup>®</sup> Patented  
Robust Duall Wall  
Thermoplastic Enclosure**  
Ambient of -25°C up to +40°C

**Main Switch**

**Superior Refrigeration Unit**

- Airflow Condenser section
- Coating on Cooler section
- Airflow SS316 Evaporator
- 2°-5°C acc. EN 16479, EN ISO 5667-3 and NEN 6600-1
- R134A

**Insulation**

PUR 40 – 60 mm foamed

**Dimensions**

± 600 x 600 x 1100 mm

**Empty Weight**

± 55 Kg



**LCD Display Jazz Controller**

- Time & Flow prop.sampling
- Event Trigger prop.sampling
- Pulse divider
- Start / Stop time
- Distributor turn time / day
- Overfill protection software
- Sampling protocol
- Alarm Output (option 2)
- Input Pulse & Current
- ECO Cooler
- MODBUS/PROFIBUS

**Process window PC**

**5 selectable sampling principles**

According EN 16479, EN ISO 5667 and NEN 6600-1

**Pull In & PADLOCK Door**

**1-2-4-8-12-24 containers**

## Efcon<sup>®</sup>omy Sampling Systems

Acc. EN 16479, EN ISO 5667-2&3&10 and NEN 6600-1

Efcon<sup>®</sup>omy products are found on standard WWTP applications. Independant functioning or as a slave to a master PLC.

Efcon<sup>®</sup>omy samplers are standard equipped with a UNITRONICS Jazz or UNITRONICS Vision 130 controller. The Jazz features all standard applications and can be prepared for BUS systems. The Vision is used for customised applications and can be adjusted for Ethernet, data Logging, Open Channel Flowmeter, Pumpcontrol etc..

**Warranty period when installed according to the installation manual**

- Thermoplastic Enclosure: 4 year
- 24 months / not including wear- and tear parts
- Delivery time: Normal Stock Item, please contact your dealer.

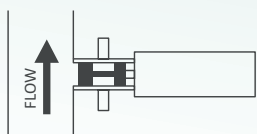
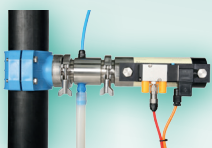


**Efcon<sup>®</sup> Water b.v. | [www.efconomy.com](http://www.efconomy.com)**

Nieuweweg 3B | 4126 RN Hei- en Boeicop | The Netherlands | Phone : +31 347 342 777 | [info@avm-efcon.nl](mailto:info@avm-efcon.nl)

# 5 Sampling Principles to select:

EN ISO 5667, NEN 6600-1



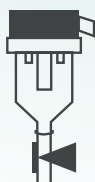
## ILS Guillotine Sampler

- Heavy Duty In Line Sampler from closed pipes
- Raw waste water & sludge sampling

### Advantages

- 6-10 Bar Actuator
- Simplicity of the system
- Stainless Steel house and cylinder
- For Raw Wastewater
- No sensors in medium
- Up to 2.5 Bar (standard) or 5 Bar medium pressure
- Optional SLUDGE model

EN 16479, EN ISO 5667, NEN 6600-1,



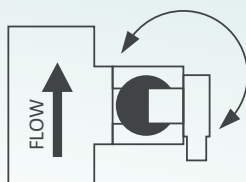
## Vacuum Sampler

- Suction sampler from open channels or wires
- 21x16 mm tubing
- Preferred for WWTP above peristaltic principle

### Advantages

- 24 VDC Actuators
- Above the ground mounting
- Most common use Principle
- Self protecting against solids
- Options to higher suction levels

EN ISO 5667, NEN 6600-1



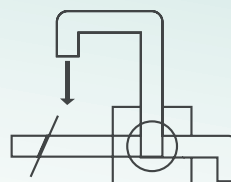
## ILS2W Sampler

- In Line Sampler from closed pipes
- Up to 4 bar medium pressure
- No raw waste water

### Advantages

- 24 VDC or 6 bar Actuator
- Simplicity of the system
- Several materials to select (SS316/PVC/PP)
- No sensors in medium
- Selectable pressure class
- Low maintenance interval
- Simple unit

EN ISO 5667, NEN 6600-1



## ILS3W Sampler

- In Line Flush through Sampler from closed pipes
- Up to 16 Bar medium pressure
- No raw parts

### Advantages

- 24 VDC or 6 Bar Actuator
- Simplicity of the system
- Several materials to select (SS316/PVC/PP)
- No sensors in medium
- Selectable pressure class
- Low maintenance interval
- Flush Water

EN 16479 and EN ISO 5667



## Peristaltic Sampler

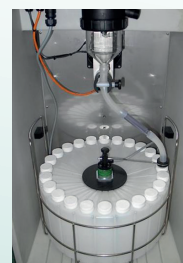
- Suction Sampler from open channels or wires
- 12x9 mm Tubing Sampler
- Not recommended for billing purposes

### Advantages

- 24 VDC Actuator
- Above the ground mounting
- Well known Principle
- Commonly used for portable equipment
- Simple Principle
- 1 moving Pump
- Low cost

## Efcon® omy Systembox

Option: Efcon® omy wastewater samplers with extra Systembox enclosure. An 'All Weather Systembox' you can mount Tracing, Flowmeters, Analytics, etc.



## Direct distribution system

- 1 Container 1 to 60 Ltr / 2 x 25 Ltr / 4 x 12,5 Ltr / 8x 6 Ltr / 12 x 2 Ltr / 24 x 1 Ltr
- Auto Drain & Auto Clean 2 x 10 L
- Material containers: PE (optional glass)

### Fully automatic

Auto Drain & Auto Clean  
3 x 17 Ltr

Efcon® Water b.v. | [www.efconomy.com](http://www.efconomy.com)

Nieuweweg 3B | 4126 RN Hei- en Boeicop | The Netherlands | Phone : +31 347 342 777 | [info@avm-efcon.nl](mailto:info@avm-efcon.nl)