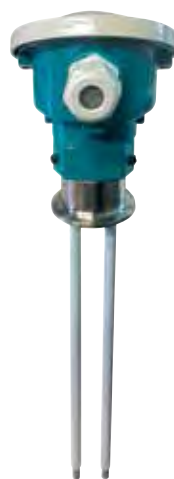


CONDUCTIVE: ON/OFF

The resistive principle uses the conductivity of the liquid to be tested. The electrical current travels through the liquid and comes into contact with the electrode detecting the reached level. The probes are available with single or multi-rod or rope electrodes (max 5). Process connections are extremely varied, threaded, flanged or sanitary type with different sizes and materials. Control units associated with the resistive probes allow the user to set the sensitivity, the delay times and also to check the connections between the probe and the control units.



	6
Applications	liquids
Material in contact	SS 316 / PVC / PTFE / FEP
Product max temperature	150°C
Max pressure	25 bar
Probe length	3 m
Process connection	G ¾" ÷ 1½" / NPT ¾" ÷ 1" DIN DN 25 ÷ 50 / clamp 1" ÷ 2"
Connection material	PVC / SS 304 L / SS 316
Atex	no
Protection	IP66
Power supply	no



	8
Applications	liquids
Material in contact	SS 316 / PTFE
Product max temperature	60°C
Max pressure	25 bar
Probe length	30 m
Process connection	G 1" ÷ 1½" / 1" NPT clamp 1" ÷ 2"
Connection material	SS 316 / PVC / PTFE
Atex	no
Protection	IP66
Power supply	no

6

conductive level switch

Multi-electrode rod probe

IP66

Up to 5 rods

Max electrode length 3 meters



Resistive instrument, rod probes, including multi-electrode, for the liquid level control in food, pharmaceutical or in general industrial processes.

8

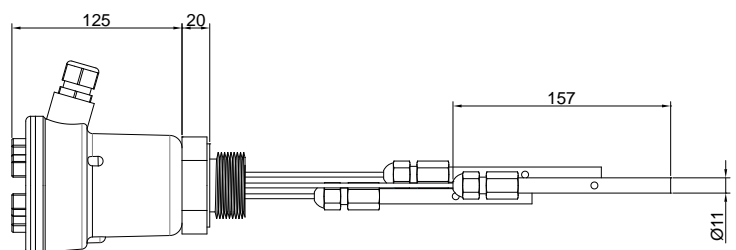
conductive level switch

Multi-electrode rod probe

IP66

Up to 5 rods

Max electrode length 3 meters



Resistive instrument, rod probes, including multi-electrode, for the liquid level control in food, pharmaceutical or in general industrial processes.

6

Multi rods electrode

Conductive level control; max 5 rods
Max electrode length: 3m

Housing	
B	Polycarbonate loaded; IP66
E	DIN B aluminum painted (n.1 electrode selection available); IP66
G	DIN A aluminum painted; IP66
Z	Special
Process connection	
02	G 1" / SS316, max 4 electrodes Ø5mm - not for DIN B housing
04	1" NPT-M / SS316 - max 4 electrodes Ø5mm - not for DIN B housing
05	G 1" / PVC - max 4 electrodes Ø5mm - not for DIN B housing
12	G 1" ½ / SS316 - not for DIN B housing
18	G 1" ½ / PVC - not for DIN B housing
20	DN25 DIN11851 SS304L (sanitary) - only with B housing and 1 electrode
21	DN40 DIN11851 SS304L (sanitary) - only with B housing
22	DN50 DIN11851 SS304L (sanitary) - only with B housing
71	Clamp 1" SS316 - not for DIN B housing
73	Clamp 1" ½ SS316 - not for DIN B housing
75	Clamp 2" material SS316 - not for DIN B housing
84	G ½" / SS316 - only with DIN B housing and 1 electrode (option B)
85	½" NPT-M / SS316 - only with DIN B housing and 1 electrode (option B)
92	G ¾" / SS316 - only with DIN B housing and 1 electrode Ø10mm (option B)
93	¾" NPT-M / SS316 - only with DIN B housing and 1 electrode Ø10mm (option B)
99	Special
Electrode n.	
B	n.1
C	n.2 Ø5mm only for process fitting cod. 02, 04, 05, 12, 18, 20, 21, 22, 71, 73, 75, 94
D	n.3; Ø5mm only for process fitting cod. 02, 04, 05, 12, 18, 21, 22, 71, 73, 75
E	n.4; Ø5mm only, only for process fitting cod. 02, 04, 05, 12, 18, 21, 22, 71, 73, 75
F	n.5; Ø5mm only, only for process fitting cod. 12, 18, 21, 22, 75
Z	Special
Electrode types and insulation, price per 100mm of each electrode (max 3m)	
36	Ø5mm SS316 rod
37	PVC coated Ø5mm SS316 rod
38	PTFE coated Ø5mm SS316 rod
40	Ø10mm SS316 rod, only one electrode per sensor possible
41	PVC coated Ø10mm SS316 rod, only one electrode per sensor possible
44	PTFE coated Ø10mm SS316 rod, only one electrode per sensor possible
99	Special

8

Multi ropes electrode

Conductive level control; max. 5 ropes
Max electrodes length 30m

Housing	
B	Polycarbonate loaded; IP66
Z	Special
Process connection	
02	G 1" / SS316
04	1" NPT-M / SS316
05	G 1" / PVC
12	G 1" ½ / SS316
18	G 1" ½ / PVC
19	G 1" ½ / PTFE
71	Clamp 1" / SS316
73	Clamp 1" ½ / SS316
75	Clamp 2" / SS316
99	Special
Electrode n.	
B	n.1
C	n.2
D	n.3
E	n.4; only for connection cod. 12, 18, 73, 75
H	n.5; only for connection cod. 12, 18, 73, 75
Z	Special
Rope type, price per meter of each electrode	
81	PVC insulated Ø1,5mm SS316
99	Special

3



3 Multi rods electrode
Conductive level control;
max 5 rods
Max electrode length: 3m

Housing	
B	PVC black; IP66
Process connection	
18	G 1" ½ / Black PVC
Electrodes support	
D	For nr. 3 electrodes
F	For nr. 5 electrodes
Accessories / Electrodes	
0	None
1	L= 1m ø6mm SS316 rod - unit price
2	L= 2m ø6mm SS316 rod - unit price
3	L= 3m ø6mm SS316 rod - unit price
4	PVC spacer (585B045P)

N



N Electrode for well and borehole

Base	
N	ON/OFF conductive level control electrode, to be fixed to the connection cable (not included) Electrode material SS316 Ø 6mm - External pipe in PVC to avoid short circuits

33

33 3 rods electrode



Base	
33	Conductive level control G 1/2" / PVC process connection IP20 mechanical protection Electrodes SS316, Ø4mm, L=300mm electrodes Working temperature up to 60°C

310

310 3 rods electrode



Base	
310	Conductive level control G 1/2" / PVC process connection IP20 mechanical protection Electrodes in SS316, Ø4mm, L=1000mm electrodes Working temperature up to 60°C

L

L PTFE insulated electrode

Conductive level control; Suitable for boiler and autoclave
G 3/8" / AISI316 process connection
SS316 Ø6mm electrode
IP00 mechanical protection; Max press. 10bar
Working temperature up to 180°C



L= Electrode length	
030	L = 300mm
050	L = 500mm
070	L = 700mm
100	L = 1000mm

11

Level control with conductivity electrodes

Suitable for conductivity liquids measurement (21microS ÷ 2100microS)

24/115/230Vac power supply

Connections with UNDECAL socket



12

Level control with conductivity electrodes

Suitable for conductivity liquids measurement (21microS ÷ 2100microS)

24/115/230Vac power supply

Connections with UNDECAL socket



13

Level control with conductivity electrodes

Suitable for conductivity liquids measurement (4microS ÷ 1000microS)

24/115/230Vac; 24 Vdc power supply

Delay time adjustable

Connections with UNDECAL socket



- 11** Unit for level conductive electrodes
- Min/max conductive level control or pump control
 Alternate control voltage to the electrodes
 2 relays SPDT contacts 3A/250Vac - Adj.sensibility
 Undecal plug-in male-socket; IP40 frontal
 Working temperature -20 +50°C

Version	
A	Standard
B	IP66
Z	Special
Power supply	
0	24Vac 50+60Hz
1	115Vac 50+60Hz
2	230Vac 50+60Hz
Accessories	
A	None
B	Undecal socket + fixing spring
Z	Special

- 12** Unit for level conductive electrodes
- Min/max conductive level control; adj.sensibility
 Alternate control voltage to the electrodes
 Control of the electrodes electrical connection "security relay"
 N1 level control relay; SPDT contacts 3A/250Vac
 N1 safety relay; SPDT contacts 3A/250Vac
 Undecal plug-in male-socket; IP40 frontal
 Working temperature -20 +50°C

Version	
A	Standard
B	IP66
Z	Special
Power supply	
0	24Vac 50+60Hz
1	115Vac 50+60Hz
2	230Vac 50+60Hz
Accessories	
A	None
B	Undecal socket + fixing spring
Z	Special

- 13** Unit for level conductive electrodes
- Min/max conductive level control or pump control
 Alternate control voltage to the electrodes
 2 relays SPDT contacts 3A/250Vac
 Adj. sensibility and delay time
 Undecal plug-in male-socket; IP40 frontal
 Working temperature -20 +50°C

Version	
A	Standard
B	IP56 (inside plastic housing cod 545A015N)
Z	Special
Power supply	
0	24Vac 50+60Hz
1	115Vac 50+60Hz
2	230Vac 50+60Hz
4	24Vdc
Accessories	
A	None
B	Undecal socket + fixing spring
Z	Special