

DATA SHEET



CS3820

CE

INDEX

TECHNICAL DATA	1
OVERALL DIMENSION	2
CS3820 LAYOUT	3
ELECTRICAL CONNECTIONS	4
GROUNDING CONNECTION	4
MAXIMUM ALLOWED SPEED	5
USER INTERFACE	6
FUNCTIONS MENU	7
HOW TO ORDER	10

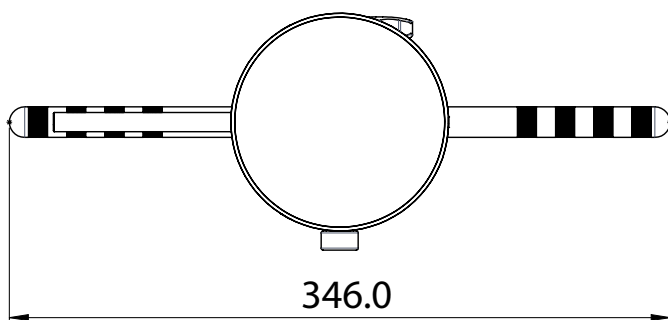
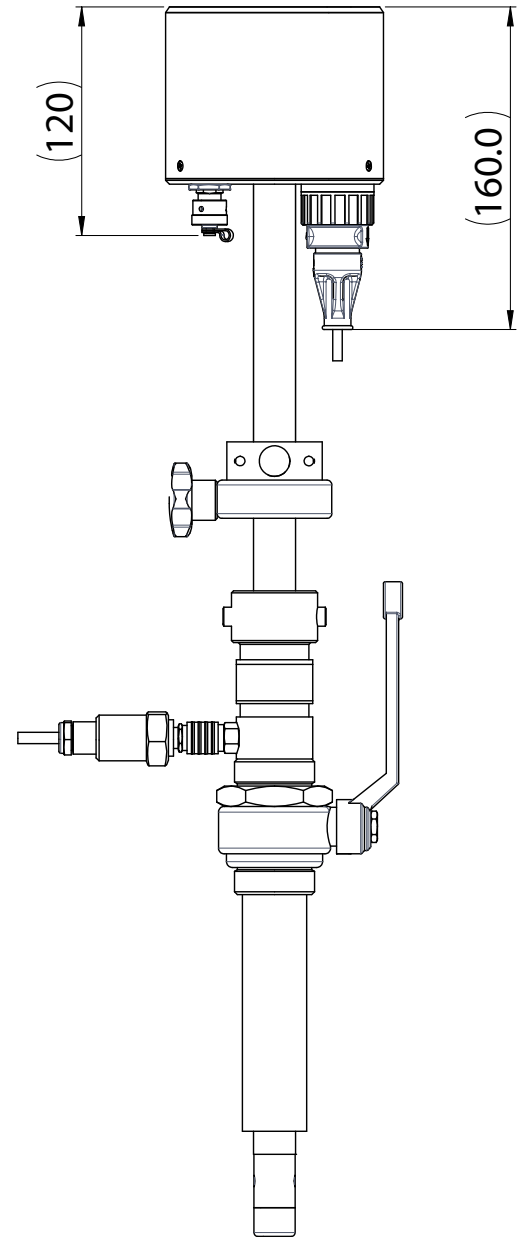
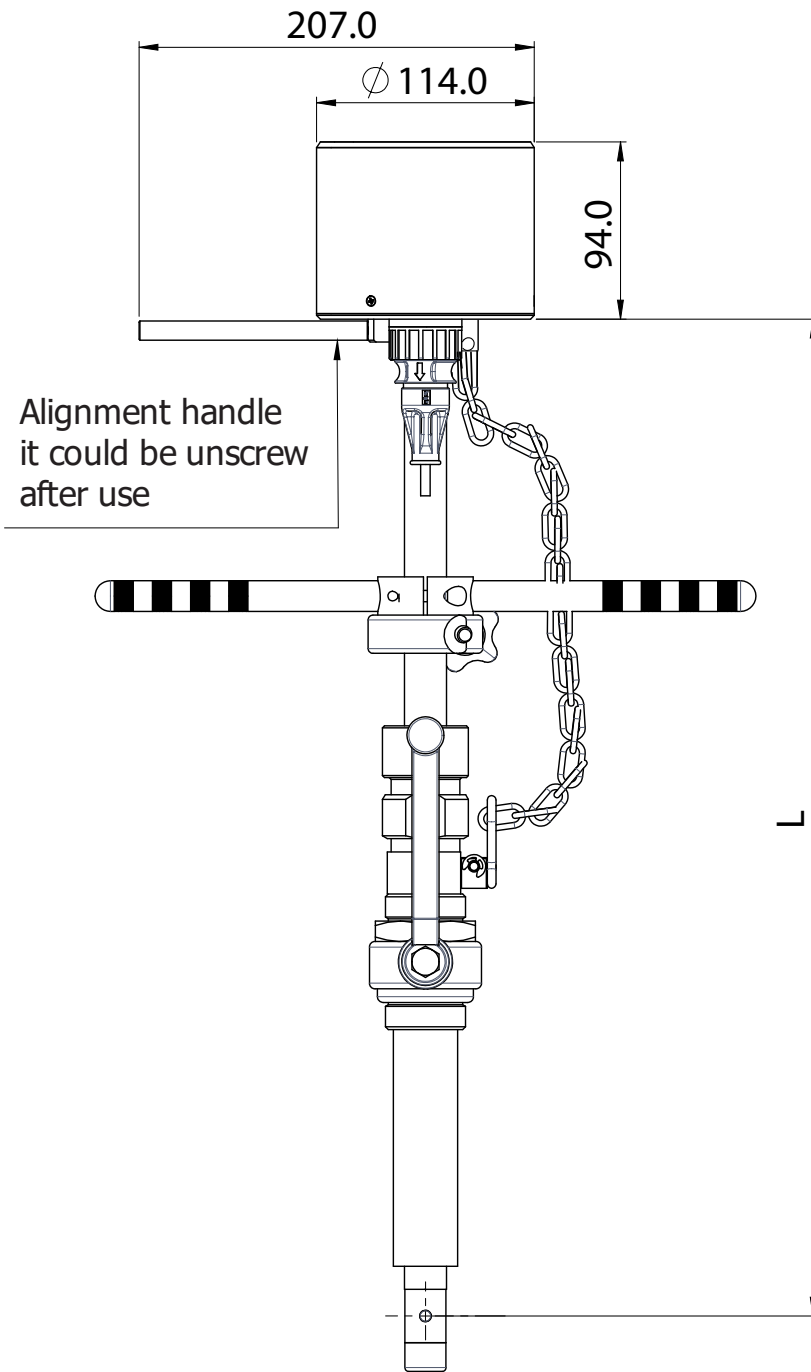
■ TECHNICAL DATA

OVERALL FEATURES

Minimum Fluid Conductivity	<input type="checkbox"/> 20 µS/cm	
Ambient Temperature	<input type="checkbox"/> -20... +50°C / -14... +122 °F	
Liquid Temperature Range	<input type="checkbox"/> 0 °C to 60 °C	
Protection	<input type="checkbox"/> IP 68 (1 meter Depth)	
Pipeline Pressure Rating	<input type="checkbox"/> 2500 kPa	
Sensor Material	<input type="checkbox"/> PEEK + Electrodes in HC276	
Body/Electrodes Material	<input type="checkbox"/> Stainless Steel AISI 316	
Process Connection	<input type="checkbox"/> 1 Inch (25mm) BSP Threaded End	
Pressure tapping	<input type="checkbox"/> Female Quick-Release Connector	
Adjustment method	<input type="checkbox"/> 5mm Allen Key Fits All Screws	
Flow Determination	<input type="checkbox"/> Assumes Developed Profile (Determined Via Flow Profiling Software)	
Size For Pipe Line Ø	<input type="checkbox"/> 65 mm To > 2000 mm. Maximum Size Dependant On Position In Pipe (For Pipe Sizes ≤150mm Accuracy Can Be Improved By Special Calibration With The Specified Pipe Size).	
Measurement Range	<input type="checkbox"/> Bidirectional From 0.02m/s to 5m/sec (Maximum Could Be Lower Dependent Upon Insertion Length And Position In Pipe)	
Accuracy	<input type="checkbox"/> Point Velocity ≥0.4m/s; ±2% <input type="checkbox"/> Point Velocity <0.4m/s; ±0,8/V% (V = Measured Water Velocity)	
Response Time	<input type="checkbox"/> liquid speed step variations>0,25 m/s CONTINUOUS CYCLE: 300 ms SMART1: 3 s SMART2: 6 s SMART5: 15 s	<input type="checkbox"/> liquid speed step variations≤0.25 m/s CONTINUOUS CYCLE: 6 s SMART1: 60 s SMART2: 120 s SMART5: 300 s
Power Supply	<input type="checkbox"/> N°2 Lithium Batteries Size D Not Rechargeable	
Battery life	<input type="checkbox"/> CONTINUOUS CYCLE: 7.8 months SMART1 : 4.8 years SMART2 : 8.3 years SMART5 : 11.8 years <input type="checkbox"/> Power consumption in case of EMPTY PIPE (the device shuts down the coil drive circuits) CONTINUOUS CYCLE : 4.5 years SMART CYCLES (ALL) : ≤ 16 years	
Safety	<input type="checkbox"/> Probe Fitted With Safety/Anti-Bounce Chain	
Gasket Material	<input type="checkbox"/> FPM (O-Ring)	
Altitude	<input type="checkbox"/> -200 m Up To 4000 m	
Data Storage	<input type="checkbox"/> EEprom	
Programming Plug In	<input type="checkbox"/> Protected Plug In For Connection To PC - USB Type A/USB Mini-B	
Communications/Protocols	<input type="checkbox"/> MCP protocol Via USB Interface	
Diagnostic Functions	<input type="checkbox"/> Yes	
Pulses/Alarm Outputs	<input type="checkbox"/> N°2 On/Off Outputs; Pulses Proportional To Velocity/Flow-Rate (Max. Frequency 100 Hz), flow rate alarms	
Data Logger	<input type="checkbox"/> SD-HC card (4 GB) for flow rate/volume/alarms (optional)	

The manufacturer guarantees only English text available on our web site www.isoil.com

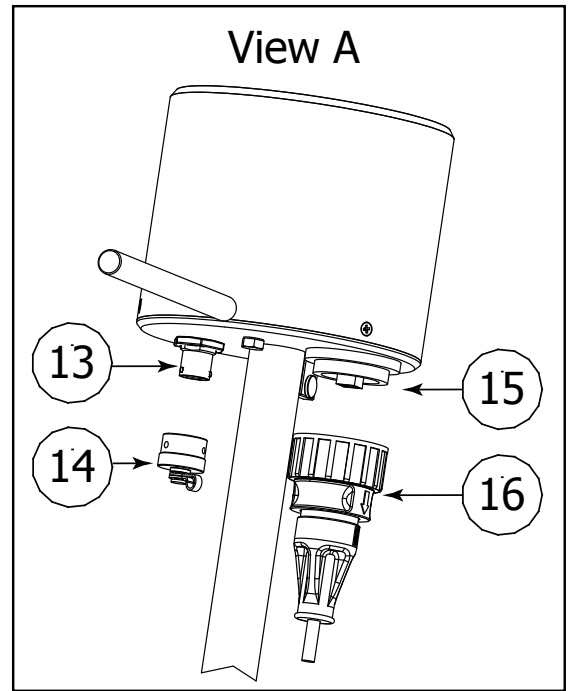
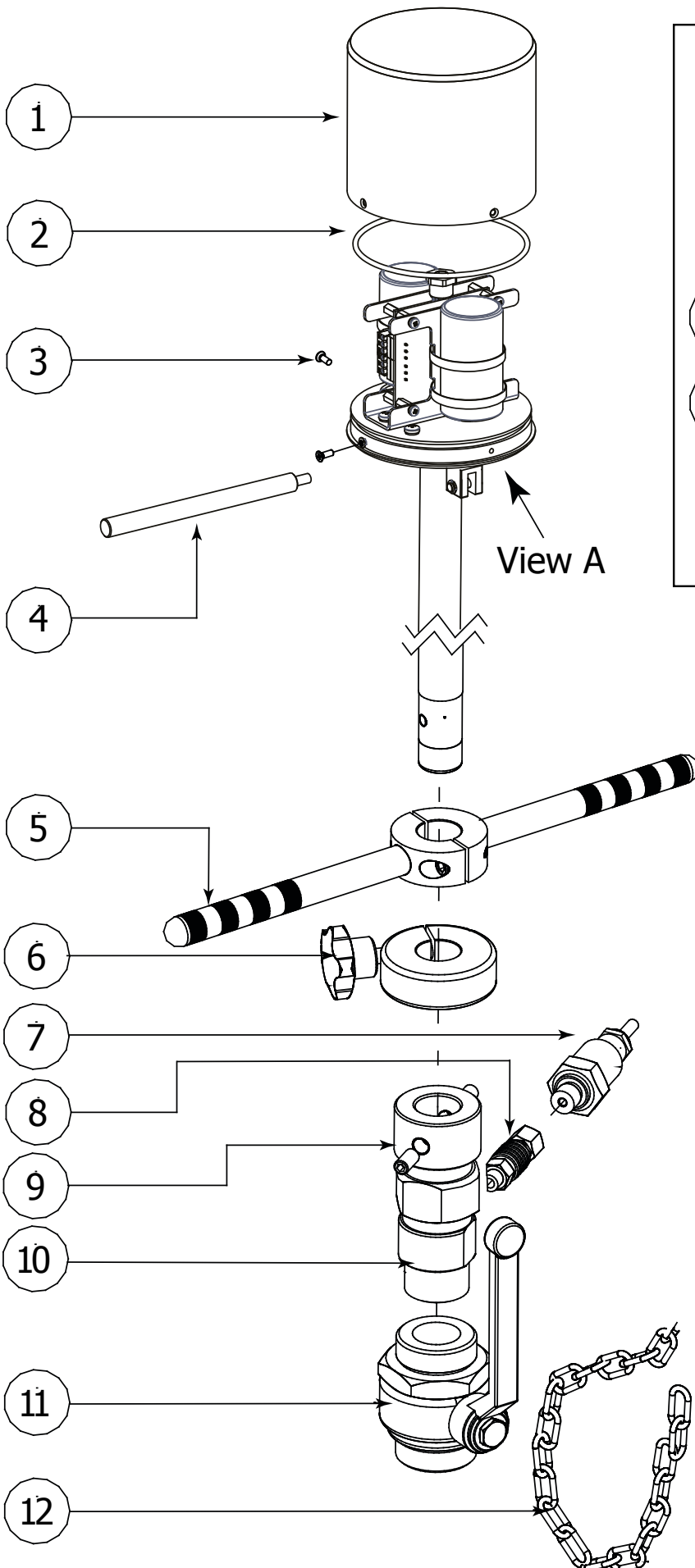
OVERALL DIMENSION



SIZE	L
0	510
1	660
2	860
3	1060
4	1360
5	2360

The manufacturer guarantees only English text available on our web site www.isoil.com

CS3820 LAYOUT

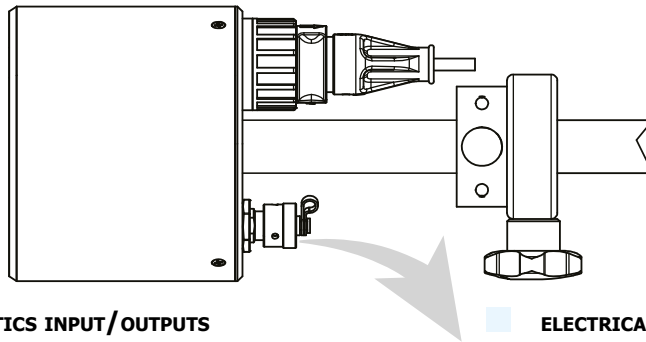


POS.	DESCRIPTION
1	POLISHED COVER
2	ORING 3500
3	STAINLESS SCREW M3x8
4	ALIGNMENT HANDLE
5	PUSH HANDLE
6	FIXING KNOB
7	PRESSURE SENSOR
8	QUICK CONN.
9	GRUB SCREW M10X12
10	1" JACKET
11	1" VALVE
12	SAFETY CHAIN
13	CONN. 62GB-57A-08-04PN (METAL)
14	CAP 62GB-814-08 (METAL)
13	CONN. UTS7-8E4P (PLASTIC UL94-V0)
14	CAP. UTS8DCGR (PLASTIC UL94-V0)
15	CONN. PAN USB CONNECTOR PX0843-B
16	USB CONNECTOR IP68 PX0840_B_3M00

The manufacturer guarantees only English text available on our web site www.isoil.com

ELECTRICAL CONNECTIONS

INPUT / OUTPUT



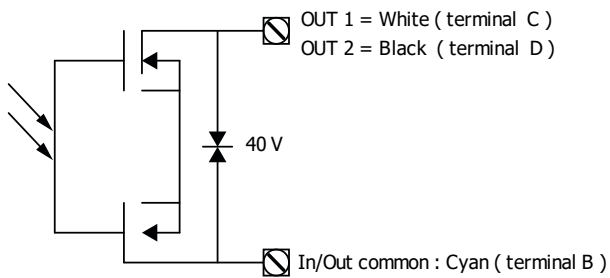
TECHNICAL CHARACTERISTICS INPUT/OUTPUTS

- Opto-insulated output (Opto- MOS)
- Maximum switching voltage: 40 Vdc
- Maximum switching current: 100mA
- Maximum Ron = 70 Ohm
- Maximum switching frequency (loadRL=240Ω,VOUT=24Vdc): 32 Hz
- Insulation from other secondary circuits: 500 Vdc

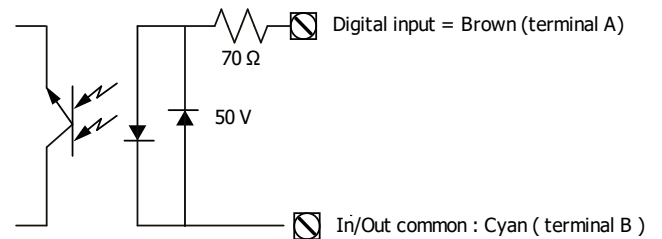
ELECTRICAL CONNECTIONS TO THE CONNECTOR

- A: DIGITAL INPUTS
- B: OUTPUTS/INPUT COMMON
- C: OUT 1
- D: OUT 2

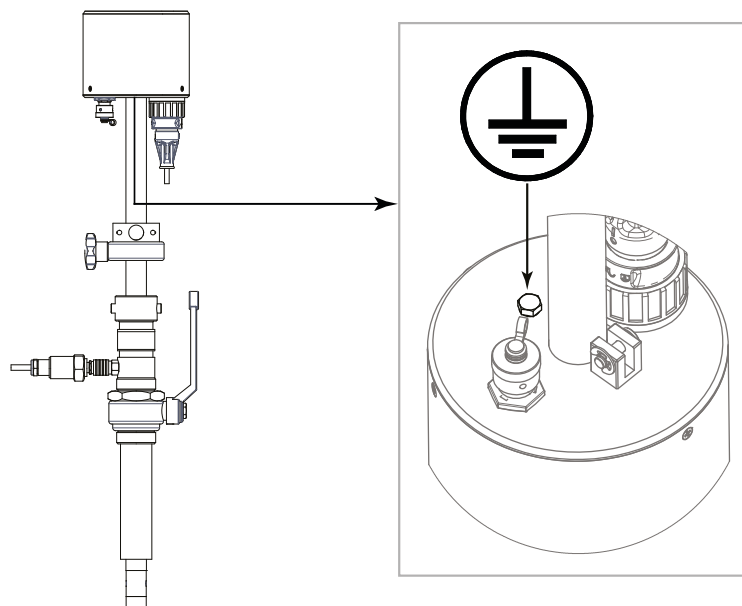
OUTPUTS WIRING DIAGRAM



INPUT WIRING DIAGRAM



GROUNDING CONNECTION



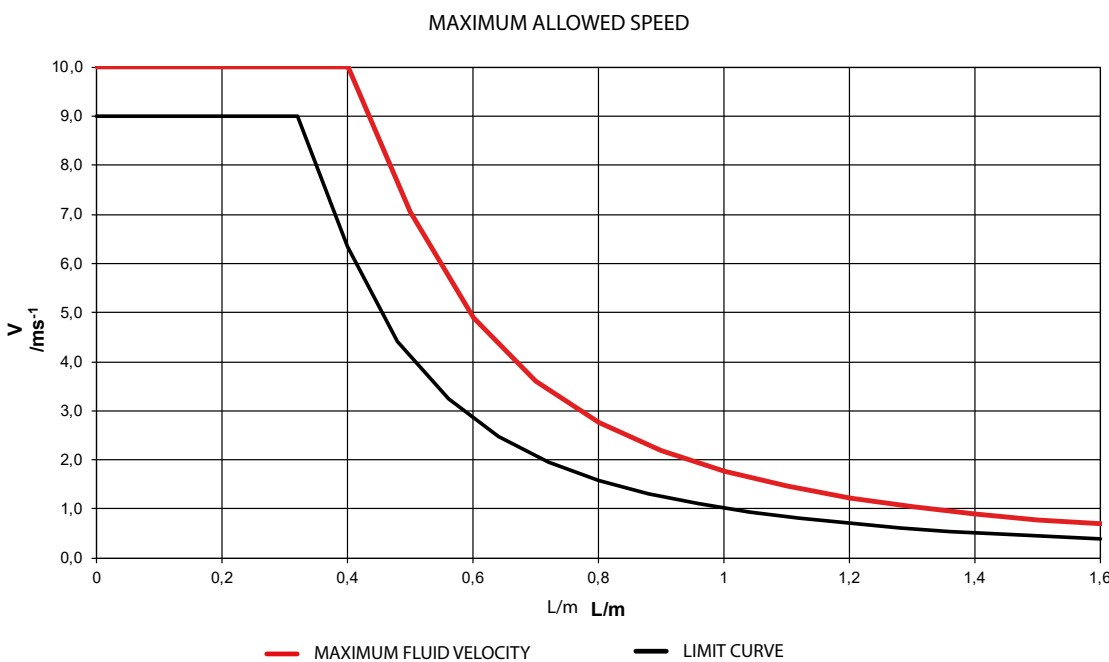
■ **MAXIMUM ALLOWED SPEED**

WARNING! The insertion and extraction operations of the insertion instruments are operations that can be dangerous when working with the pressure tube.

The pressure inside the tube apply a significant force on the probe that can be ejected violently, creating dangerous situations for the operators. However, the protection chain provided by the instrument does not allow it to completely escape from the cylinder linear. It is recommended to perform the insertion or extraction operations of the insertion instrument in safe conditions, if possible with not in pressure pipe or at least reduced pressure pipe. The extraction operations can be dangerous as well as for the risk connected to the ejection forces of the probe, also due to the possible leakage of liquid from the piping caused by incorrect operation or defect in the shut-off valve.

The following are the indicative values of expulsion force at different pressure values:

INTERNAL PRESSURE PIPE [bar]	EXPULSION FORCE [kg]
6	30
10	50
16	80
25	125

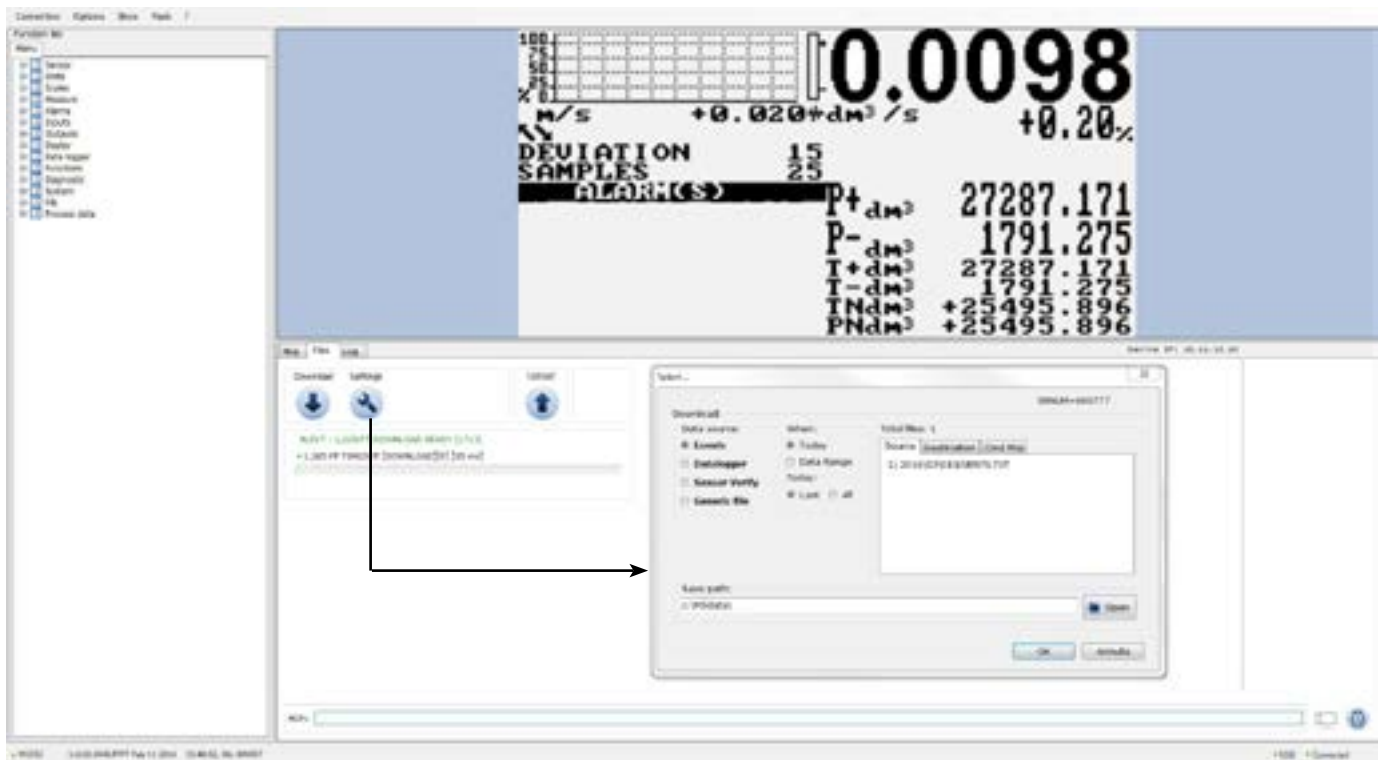


INSERTION DEPTH	MAXIMUM FLUID VELOCITY
L	V
m	ms-1
0.10	10.0
0.20	10.0
0.30	10.0
0.40	10.0
0.50	7.06
0.60	4.91
0.70	3.60
0.80	2.76
0.90	2.18
1.00	1.77
1.10	1.46
1.20	1.23
1.30	1.04
1.40	0.90
1.50	0.78
1.60	0.69

The manufacturer guarantees only English text available on our web site www.isoil.com

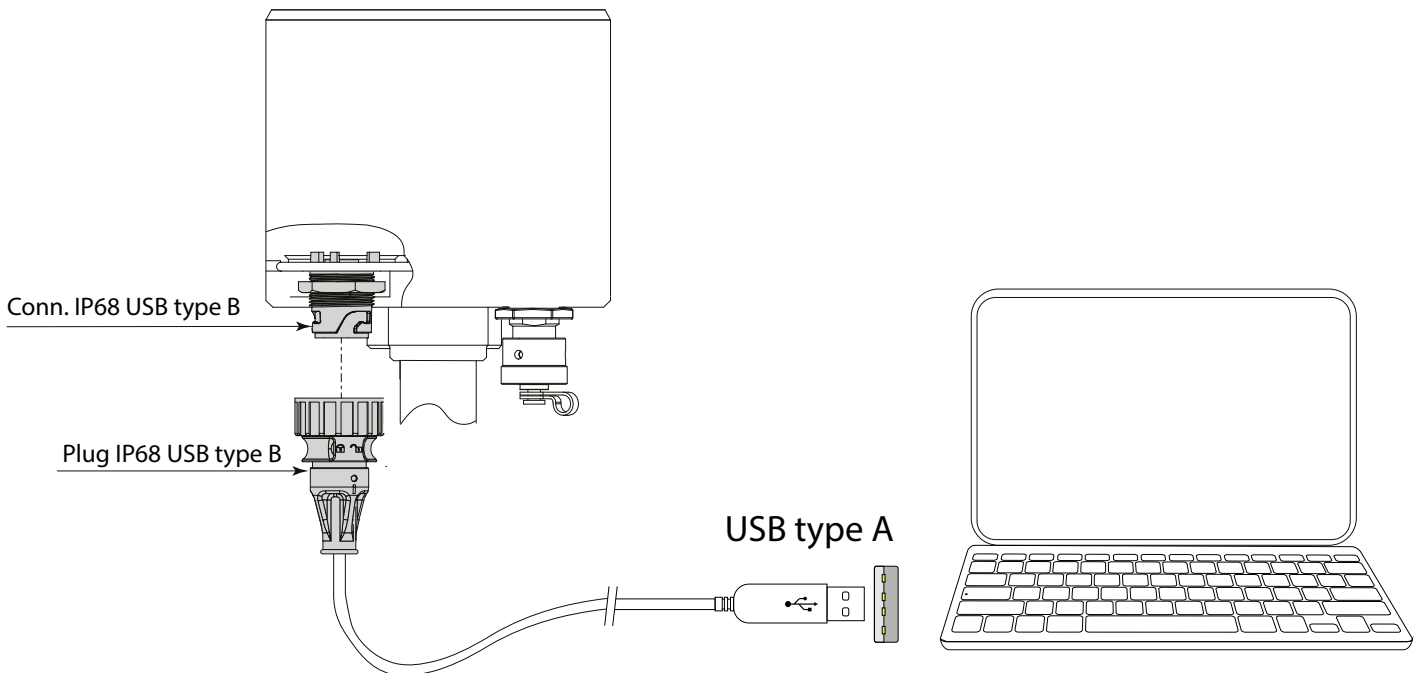
■ USER INTERFACE

CS3820 can be programmed by MCP interface (USB cable is required see below)



The manufacturer guarantees only English text available on our web site www.isoil.com

Make the USB connection as shown in the following figure.



FUNCTIONS MENU

```

MAIN MENU
1-Sensor
SENSOR
S.model 0031
Lining= UNSPEC.
S.type= FULL BORE
U.type= METRIC
Diam.=mm 700
KA= +04.4914
KA-= -04.4904
KZ= +0018852
KD= +0000852
Ins.position= 0
KP dynamic= OFF
Ki= +01.0000
Kp= +01.0000
KC= 1.00000
C.Curr.=mA 025.0
S.time 000
Reg.C.T 000
C.R.time 000
E.P.Detect= ON
Z max=kohm 0500
S.err.delay= 010
Sens.verify= OFF
KL= 00.000000000
Zero point cal.
    
```

- 1.1 Sensors model: Enter the first two characters of the serial number of the probe
- 1.2 Flow sensor lining material type
- 1.3 Type of sensor: fullbore or insertion
- 1.4 Type of measure units for sensor parameter: metric or imperial
- 1.5 Insert ND of sensor (0-2500)
- 1.6 Calibration data of sensor visualized on sensor's label
- 1.7 Calibration data of sensor for negative flow
- 1.8 Sensor coefficient KZ (zero point)
- 1.9 Insertion position
- 1.10 KP dynamic, coefficient for insertion
- 1.11 Sensor coefficient Ki factory parameters
- 1.12 Sensor coefficient Kp factory parameters
- 1.13 Sensor coefficient KC factory parameters
- 1.14 Sensor excitation current
- 1.15 Measure sampling time
- 1.16 Current regulator charge time
- 1.17 Coils current rise time
- 1.18 Enables the empty pipe detection feature
- 1.19 Maximum input impedance thresh.
- 1.20 Signal error delay (n. sample)
- 1.21 Automatic sensor verify
- 1.22 Automatic sensor verify
- 1.23 Linearization coefficient
- 1.24 Enable zero calibration

```

MAIN MENU
1-Sensor
2-Units
UNITS
Diam.= MM
S.cable= M
FR.unit= METRIC
Pl1 unit= METRIC
Pl2 unit= METRIC
T+ unit= METRIC
T+ unit= g
T+ D.P.= 3
P+ unit= METRIC
P+ unit= g
P+ D.P.= 3
T- unit= METRIC
T- unit= g
T- D.P.= 3
P- unit= METRIC
P- unit= g
P- D.P.= 3
Temp.unit= °C
Mass units= ON
Sg=kg/dm³ 1.0000
    
```

- 2.1 Nominal diameter measure unit
- 2.2 Cable length on separate version
- 2.3 Flowrate type measure unit: metric or not metric
- 2.4 Pulse1 Flowrate type measure unit: metric or not metric
- 2.5 Pulse2 Flowrate type measure unit: metric or not metric
- 2.6 Total direct totalizer measure unit type: metric or not metric
- 2.7 Total direct totalizer measure unit
- 2.8 Total direct totalizer decimal point position
- 2.9 Partial direct totalizer measure unit type: metric or not metric
- 2.10 Partial direct totalizer measure unit
- 2.11 Partial direct totalizer decimal point position
- 2.12 Total reverse totalizer measure unit type: metric or not metric
- 2.13 Total reverse totalizer measure unit
- 2.14 Total reverse totalizer decimal point position
- 2.15 Partial reverse totalizer measure unit type: metric or not metric
- 2.16 Partial reverse totalizer measure unit
- 2.17 Partial reverse totalizer decimal point position
- 2.18 Temperature measure unit
- 2.19 Mass unit enabling
- 2.20 Specific gravity coefficient

```

MAIN MENU
1-Sensor
2-Units
3-Scales
SCALES
FSL= 1/s 3920.0
Pls1=dm³ 1.00000
Tpls1=ms 0000.4
Pls2=dm³ 1.00000
Tpls2=ms 0000.4
12-Diagnostic
13-System
    
```

- 3.1 Full scale flow rate
- 3.2 Pulse value on channel 1
- 3.3 Duration of the pulse generated on channel 1
- 3.4 Pulse value on channel 2
- 3.5 Duration of the pulse generated on channel 2

```

MAIN MENU
1-Sensor
2-Units
3-Scales
4-Measure
MEASURE
M.P.P. = SMART1
Cut-off=% 00.0
LP Cyclesim.= OFF
Cal.verify= OFF
12-Diagnostic
13-System
    
```

- 4.1 Consumption profiles: CONT. PWR - SMART1 - SMART2 - SMART5
- 4.2 Low flow zero threshold: 0-25% of full scale value
- 4.3 Low power Measure Cycle Simulation
- 4.4 Automatic calibration verify enable

The manufacturer guarantees only English text available on our web site www.isoil.com

```

MAIN MENU
1-Sensor
2-Units
3-Scales
4-Measure
5-ALARMS
6-
7-
8-
9-
10-
11-
12-
13-
    
```

- | | | | |
|--------------|-----|-----|---|
| Max. thr+=% | 000 | 5.1 | Maximum value alarm set for direct flow rate |
| Max. thr-=% | 000 | 5.2 | Maximum value alarm set for reverse flow rate |
| Min. thr+=% | 000 | 5.3 | Minimum value alarm set for direct flow rate |
| Min. thr-=% | 000 | 5.4 | Minimum value alarm set for reverse flow rate |
| Hysteresis=% | 03 | 5.5 | Hysteresis threshold set for the minimum and maximum flow rate alarms |

```

MAIN MENU
1-Sensor
2-Units
3-Scales
4-Measure
5-ALARMS
6-Inputs
7-
8-
9-
10-
11-
12-
13-
    
```

- | | | | |
|--------------|-----|-----|--|
| I+ reset= | OFF | 6.1 | Total direct (positive) flow totalizer reset enable |
| P+ reset= | OFF | 6.2 | Partial direct (positive) flow totalizer reset enable |
| I- reset= | OFF | 6.3 | Total reverse (negative) flow totalizer reset enable |
| P- reset= | OFF | 6.4 | Partial reverse (negative) flow totalizer reset enable |
| Count lock= | OFF | 6.5 | Totalizer counting lock command |
| Meas. lock= | OFF | 6.6 | Measure zero lock command |
| Calibration= | OFF | 6.7 | Calibration external command |

```

MAIN MENU
1-Sensor
2-Units
3-Scales
4-Measure
5-ALARMS
6-Inputs
7-Outputs
8-
9-
10-
11-
12-
13-
    
```

- | | | | |
|-------|-----|-----|--------------------|
| Out1= | OFF | 7.1 | Output 1 functions |
| Out2= | OFF | 7.2 | Output 2 functions |

```

MAIN MENU
1-Sensor
2-Units
3-Scales
4-Measure
5-ALARMS
6-Inputs
7-Outputs
8-
9-Display
10-Data logger
11-Functions
12-Diagnostic
13-System
    
```

- | | | | |
|--------------|-----|-----|--|
| Language= | EN | 9.1 | Choice of the language: E= English, I=italian, F= French, S= Spanish |
| Disp. time=s | 060 | 9.2 | Display/keyboard inactivity time |
| Part. tot.= | ON | 9.3 | Partial totalizer enable |
| Neg. tot.= | ON | 9.4 | Negative totalizer enable |
| Net tot.= | ON | 9.5 | Net totalizer enable |
| Disp. date= | ON | 9.6 | Time and date display enable |
| Quick start= | OFF | 9.7 | Quick start menu enable |

The manufacturer guarantees only English text available on our web site www.isoil.com

```

DATA LOGGER
D. logger en.= ON
Meas. units= ON
Field separ.= :
Decim separ.= .
Interv.= 01:01:00
Log T+= ON
Log P+= ON
Log T-= ON
Log P-= ON
Log TN= ON
Log PN= ON
Log Q(UM)= ON
Log Q(%)= ON
Log AL.EV= ON
Log STR= ON
Log BTS= ON
Log IBU= ON
Log EDC= ON
Log EAC= ON
Log EIZ= ON
Log SCU= ON
    
```

- 10.1 Data logger enable
- 10.2 Measure unit recording enable
- 10.3 Field separator character
- 10.4 Decimal separator character
- 10.5 Sampling interval
- 10.6 Enable logging of total direct totalizer
- 10.7 Enable logging of partial direct totalizer
- 10.8 Enable logging of total reverse totalizer
- 10.9 Enable logging of partial reverse totalizer
- 10.10 Enable logging of total net totalizer
- 10.11 Enable logging of partial net totalizer
- 10.12 Enable logging of flow rate in measure unit
- 10.13 Enable logging of flow rate in percentage
- 10.14 Enable logging of alarm events
- 10.15 Enable logging of sensor test results
- 10.16 Enable logging of board temperature
- 10.17 Enable logging of internal board voltage
- 10.18 Enable logging of electrodes DC voltage
- 10.19 Enable logging of electrodes AC voltage
- 10.20 Enable logging of electrodes impedance
- 10.21 Enable logging of sensor coils value

```

10-Data logger
11-Functions
12-Diagnostic
13-System
    
```

```

FUNCTIONS
P+ reset
P- reset
T- reset
P- reset
Load Sens.f.def
Load Conv.f.def
Save Sens.f.def
Save Conv.f.def
Calibration
    
```

- 11.1 Execute immediate reset of total direct totalizer
- 11.2 Execute immediate reset of partial direct totalizer
- 11.3 Execute immediate reset of total reverse totalizer
- 11.4 Execute immediate reset of partial reverse totalizer
- 11.5 Load sensor factory default
- 11.6 Load converter factory default
- 11.7 Save sensor factory default values
- 11.8 Save converter factory default values
- 11.9 Execute immediate internal circuit calibration

```

11-Functions
12-Diagnostic
13-System
    
```

```

DIAGNOSTIC
Self test
Sens.verify
Flow sim.= ON
Display measures
Disp.comm.vars
SD card info
Firmware info
S/N= 999001
WT=0002:21:00:22
    
```

- 12.1 Self test diagnostic function
- 12.2 Sensor verify diagnostic function
- 12.3 Flow rate simulation enable
- 12.4 Display internal measured value
- 12.5 Display communication diagnostic values
- 12.6 Sd card status informations
- 12.7 Firmware version/revision
- 12.8 Board serial number
- 12.9 Total working time

```

12-Diagnostic
13-System
    
```

```

SYSTEM
Deul.saving= ON
Time zone=h+01.00
2016/04/04-16:07
L1 code=*****
L2 code=*****
L3 code=*****
L4 code=*****
L5 code=*****
L6 code=*****
Restr.access= ON
Tc 0.964
010.011.012.013
010.011.012.014
255.255.255.000
KT= 0.96469
KS= 1.00000
KR= 1.00000
Stand-by
FW update
    
```

- 13.1 Daylight saving time change
- 13.2 Localized time zone
- 13.3 System date and time
- 13.4 Access level 1 code
- 13.5 Access level 2 code
- 13.6 Access level 3 code
- 13.7 Access level 4 code
- 13.8 Access level 5 code
- 13.9 Access level 6 code
- 13.10 Restricted access level
- 13.11 Total Measure CYCles
- 13.12 Device IP network address
- 13.13 Client IP network address
- 13.14 Network mask
- 13.15 Calibration coefficient KT
- 13.16 Calibration coefficient KF
- 13.17 Calibration coefficient KR
- 13.18 Stand-by
- 13.19 firmware update

```

13-System
    
```

■ HOW TO ORDER

CODE EXAMPLE	<i>Suitable for piping diameter</i>	
0	0	maximum insertion depth 150 mm
	1	maximum insertion depth 300 mm
	2	maximum insertion depth 500 mm
	3	maximum insertion depth 700 mm
	4	maximum insertion depth 1000 mm
	5	maximum insertion depth 2000 mm
	9	to be specified
Sensor and electrodes material / lining		
A	A	Sensor material AISI316, head in PEEK, electrodes in AISI316, gasket in FPM
	Z	Sensor material: to be specified
Accessory for mounting in pressurised pipe line		
1	1	Mounting in pipe without pressure (by the use of the own handles), connection 1" UNI338 (GAS)
	2	Accessory kit, suitable for mounting in pressurised line, composed by: 1" hose-coupling (to welding on the pipe) and 1" ball valve (Bronze material) ; all connections 1" UNI 338 (GAS)
	3	Mounting in pipe without pressure (by the use of the own handles) ; connection 1" NPT
	4	Accessory kit, suitable for mounting in pressurised line, composed by: 1" hose-coupling (to welding on the pipe) and 1" ball valve (Bronze material) ; all connections 1" NPT
	6	Accessory kit, suitable for mounting in pressurised line, composed by: 1" hose-coupling (to welding on the pipe) and 1" ball valve (Bronze material) 1" Uni 338 (GAS)+ QUICK CONNECTIONS 1/8"
	7	Accessory kit, suitable for mounting in pressurised line, composed by: 1" NPT + QUICK CONNECTIONS 1/8"
	8	Accessory kit, suitable for mounting in pressurised line, composed by: 1" UNI 338 (GAS) sleeve connection + QUICK CONNECTIONS 1/8"
	9	Special connection: to be specified
	Version / Protection rate	
A	A	Compact version, IP68 protection rate, liquid maximum temperature 100 °C - 4 POLES MALE CONNECTORS MIL ALUMINUM
	B	Compact version, IP68 protection rate, liquid maximum temperature 100 °C - 4 POLES MALE CONNECTORS SOURIAU - PLASTIC
	C	Compact version, IP68 protection rate, liquid maximum temperature 100 °C - 4 POLES CONNECTORS MIL ALUMINUM MALE + FEMALE
	D	Compact version, IP68 protection rate, liquid maximum temperature 100 °C - 4 POLES CONNECTORS MIL ALUMINUM MALE + FEMALE WITH 2 METERS OF CABLE ALREADY CONNECTED
Converter		
0	0	mod. ML252 (converter with: 2 Lithium batteries, 2 digital out)
Suitable for Pipe Size		
A	A	> 150 mm
	B	< 150 mm
Accuracy		
1	1	Standard ($V > 0,4 \text{ m/s} = 2\%$; $V < 0,4 \text{ m/s} = 0,8/\text{Measured V}$) ; V = fluid velocity
	2	Special
Data Logger		
A	A	Without Data Logger
	B	MicroSD Memory 4 GB : Data Logger + RTC (Real Time Clock)
	C	MicroSD Memory 4 GB : Data Logger + RTC (Real Time Clock) + BIV (Built In Verificator)
	D	MicroSD Memory 4 GB : Data Logger + RTC (Real Time Clock) + Meter Data (Real Time Converter & Sensor Data on SD Memory)
	E	MicroSD Memory 4 GB : Data Logger + RTC (Real Time Clock) + BIV + Meter Data

The manufacturer guarantees only English text available on our web site www.isoil.com



CS3820 0A1A0A1A (Example of Complete code for order)

ISOIL INDUSTRIA S.p.A.

HEAD OFFICE	SERVICE
Via Fratelli Gracchi, 27 20092 Cinisello Balsamo (MI) Tel +39 02 66027.1 Fax +39 02 6123202 vendite@isoil.it	isomagservice@isoil.it

If you want to find the complete list of our distributors access at the following link:
http://www.isoil.com/u_vendita.asp



Due to the constant technical development and improvement of its products, the manufacturer reserves the right to make changes and/or modify the information contained in this document without notice.