

WPZ

ISOTHERMIC

Flowsensor

for hot water up to 130 °C

DN 40 ... DN 300



Special Features

Patented hydrodynamically balanced rotor

Patented symmetrical calibration adjustment

Hermetically sealed register (IP 68)

Register may be rotated through 360°

High overload capability

Pattern approved removable measuring element

Up to 3 pulsers (1 x OD, 2 x RD) may be fitted without breaking the approval seal

Powder coating ensures maximum corrosion protection

Flowsensors Pressure rate PN 40 please see separate leaflet

Application

Measurement of high, relatively constant flow rates

Pattern Approval


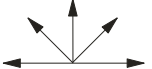
22.16

Nominal Diameter DN 50 ... 150

96.01

Marking:
Metrological class B

Installation

Pipe	horizontal vertical inclined	
Meter head	upwards sideways	

Installation Requirements

- Unrestricted straight pipe in front of the meter 3 x DN
- No abrupt restrictions directly behind the meter

Technical Data

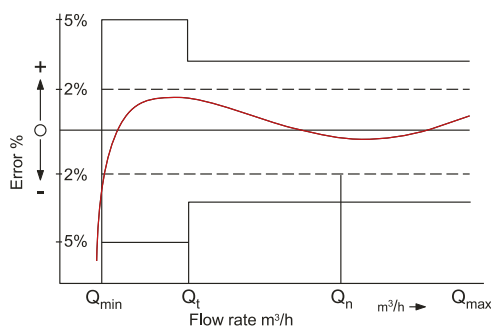
Performance data WPZ 130 °C

Nominal Diameter	DN		50	65	80	100	125	150	200	250
Size of meter (acc. to PTB-A22)	Q _n		15	25	40	60	100	150	250	400
Q _{max}	maximum peak flow once lifetime 24 h Q _{max} or 5 min. 1.2 x Q _{max}	m ³ /h	30	60	90	140	200	300	500	1000
Q _n	continuous flow (±2%)	m ³ /h	15	25	45	70	100	150	250	500
Q _t	transitional flow (±2%)	m ³ /h	1.8	2.0	3.2	4.8	8.0	12	20	45
Q _{min}	minimum flow (±5%)	m ³ /h	0.6	1.0	1.4	2.0	3.5	4.5	8	20
	starting flow	m ³ /h	0.25	0.3	0.35	0.6	1.1	1.7	2.0	10

Performance data table according to PTB-A22 specification class B

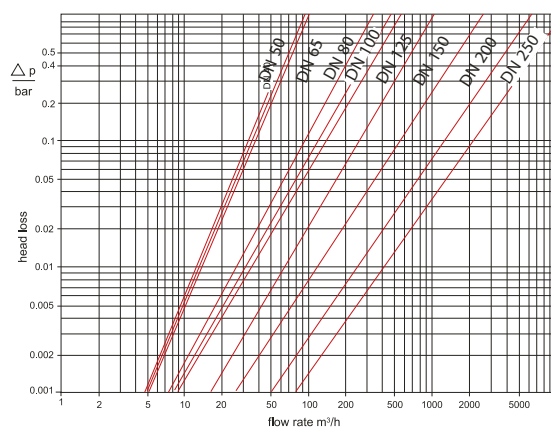
Nominal Diameter	DN		50	65	80	100	125	150	200	250
Size of meter (acc. to PTB-A22)	Q _n		15	25	40	60	100	150	250	400
Q _{max}	maximum peak flow short time	m ³ /h	30	50	80	120	200	300	500	800
Q _n	continuous flow (±3%)	m ³ /h	15	25	40	60	100	150	250	400
Q _t	transitional flow (±3%)	m ³ /h	2.25	3.75	6.0	9.0	15.0	22.5	37.5	60
Q _{min}	minimum flow (±5%)	m ³ /h	0.6	1.0	1.6	2.4	4.0	6.0	10.0	16.0

Typical Accuracy Curve



- Q_{max} = maximum peak flow
- Q_n = continuous flow ±2%
- Q_t = transitional flow ±2%
- Q_{min} = minimum flow ±5%

Typical Head Loss Curve

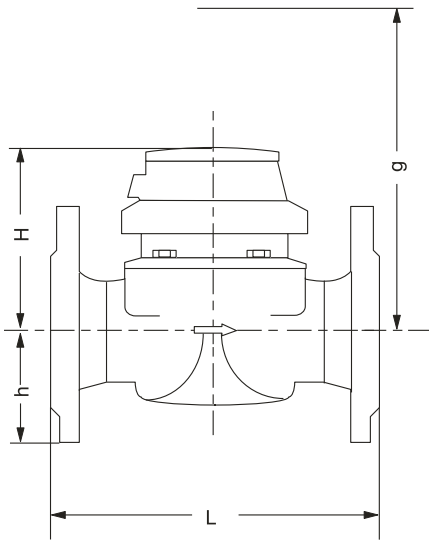


Dimensions and Weights

Nominal Diameter	DN		50	65	80	80	100	125	150	200	250	
Size of meter (acc. to PTB-A22)	Q _n		15	25	40	40	60	100	150	250	400	
Dimensions	overall length	L *)	mm	200	200	200	225	250	250	300	350	450
	height	H	mm	120	120	150	150	150	160	177	206	231
		h	mm	73	85	95	95	105	118	135	162	194
		g	mm	200	200	270	270	270	280	356	441	466
Weights	meter		kg	7.7	10.0	13.6	14.0	18.0	20.5	35.5	72.3	
	measuring element		kg	1.4	1.4	3.0	3.0	3.0	3.0	5.5	7.5	
	body		kg	6.3	8.6	10.6	11.0	15.0	17.5	30.0	71.3	

*) Other overall lengths on request

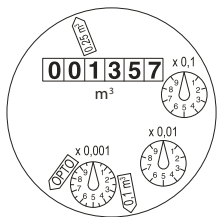
Dimension Picture



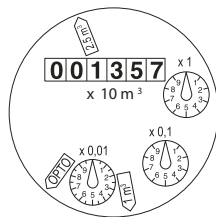
Materials

Body	cast iron
Measuring element	plastic
Rotor	plastic
We also use the following materials	brass stainless steel

Dials



DN 50 ... DN 125



DN 150 ... DN 250

Nominal Diameter DN	Smallest reading m ³	Max. reading m ³
50 ... 125	0.0005	1 000 000
150 ... 250	0.005	10 000 000

Pulse Values*

DN50 DN125	DN150 DN250
1pulse / 1 Liter	1pulse / 10 Liters
1pulse / 10 Liters	1pulse / 100 Liters
1pulse / 100 Liters	1pulse / 1000 Liters

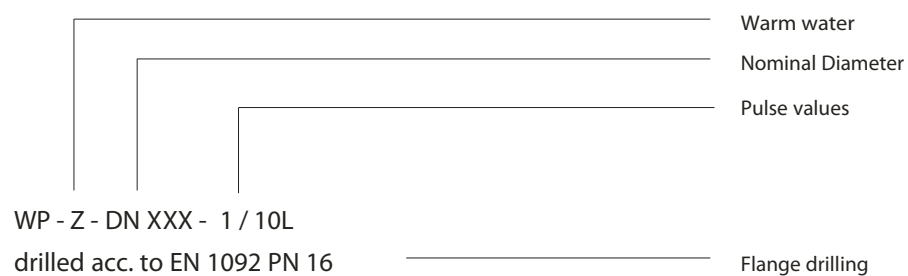
* Others pulse values not standard on request

Available Design

Nominal Diameter	DN	50	65	80	80	100	
Size (acc. to PTB-A22)	Qn	15	25	40	40	60	
Overall Length	mm	200	200	200	225	250	

Nominal Diameter	DN	125	150	200	250		
Size (acc. to PTB-A22)	Qn	100	150	250	400		
Overall Length	mm	250	300	350	450		

Order Example



Cinisello B. - MI (Italy)
Tel. (+39)0266027.1
Fax. (+39)02 6123202
www.isoil.it
isothermic@isoil.it

ISOIL 
INDUSTRIA
Le soluzioni che contano